



MILES ESTATE AGENTS

Woodford House Woodford Williton
Taunton TA4 4HR £795,000

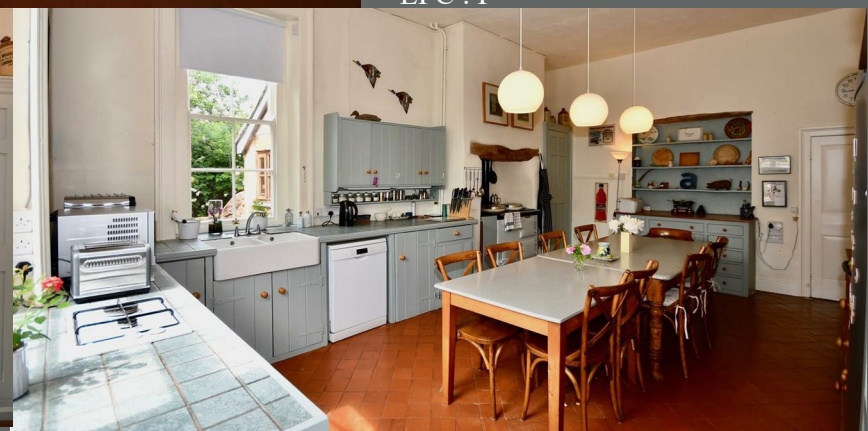


A lovely, well presented mid 19th Century sandstone former Land Agents house with substantial yet unimposing highly flexible accommodation over 3 storeys including 5 double bedrooms, 3 en suites and 2 bathrooms, easily lending itself to B&B or multi generational living within a small hamlet in the Exmoor National Park, yet with easy access to Williton, Dunster Castle and the Somerset coastline. Well proportioned reception rooms, fabulous kitchen/breakfast room with powder blue AGA and super ancillary spaces including dressing room, sewing room and spacious office/studio. Beautiful established walled gardens with a large variety of flowers, plants and shrubs together with useful outbuildings, workshop and ample parking. Additional section of productive sloping land opposite. Truly a rare find - early viewing is highly recommended. Freehold Council Tax Band F EPC : F.



Features:

- Entrance hall with grand staircase
- Spacious sitting room with woodburner
- Separate dining room
- Fabulous kitchen/breakfast room with AGA
- Ground floor bedroom with small study area & en suite shower room
- Laundry & walk in larder
- 3 generous double bedrooms, 2 with en suites on 1st floor
- Family bathroom & sewing room
- Further double bedroom with dressing room & bathroom on 2nd floor
- Large office/studio
- Beautiful established walled gardens with several useful outbuildings & workshop
- Off road parking for several cars
- Additional sloping land opposite
- Annexe / B&B potential
- Freehold
- Council Tax Band F
- Oil fired central heating & drainage to septic tank
- EPC : F











Woodford, Williton, Taunton, TA4

Approximate Area = 3737 sq ft / 347.1 sq m

Limited Use Area(s) = 123 sq ft / 11.4 sq m

Outbuildings = 531 sq ft / 49.3 sq m

Total = 4391 sq ft / 407.8 sq m

For identification only - Not to scale

Denotes restricted
head height



Viewings strictly through the selling
agents:

Miles Estate Agents

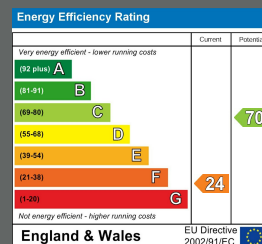
2 Piffin Lane, Bishops Lydeard, Taunton,
Somerset, TA4 3AS

Tel: 01823 470 500

lydeard@milesestateagents.co.uk

www.milesestateagents.co.uk

Floor plan produced in accordance with RICS Property Measurement 2nd Edition,
Incorporating International Property Measurement Standards (IPMS2 Residential). © nichecom 2025.
Produced for Miles Alexander Limited T/A Miles Estate Agents. REF: 1302986



rightmove

OnTheMarket.com

MILES ESTATE AGENTS



